

TOWN OF GREENEVILLE
 (TUSCULUM VIEW SCHOOL)
 D.B. 228 - PG. 500
 D.B. 226 - PG. 560
 T.M. 87-N GROUP "A"
 PARCEL 6

ARC
195.77
36.52
39.15

KENNETH BATES
 DB-3714/PG-2253
 TAX MAP 087N GROUP "D"
 PARCEL 001.00

OREILLY AUTOMOTIVE INC.
 DB-3544/PG-2756
 TAX MAP 087N GROUP "D"
 PARCEL 001.01

SRI REAL EST PROP LLC.
 DB-4194/PG-1278
 TAX MAP 087N GROUP "D"
 PARCEL 001.02

JEEYA HOSPITALITY LLC.
 DB-424A/PG-975
 TAX MAP 087L GROUP "A"
 PARCEL 018.00

MARY EMMA LYLE
 TAX MAP 087L
 GROUP "A"
 PARCEL 019.00

Temporary 50' Transport
 benefit Tracts 2 and 3.
 remain open until the p
 fronting Tracts 2 and 3
 accepted by the City of
 the Street is complete t
 Tracts 2 and 3 by the
 Transportation Easement

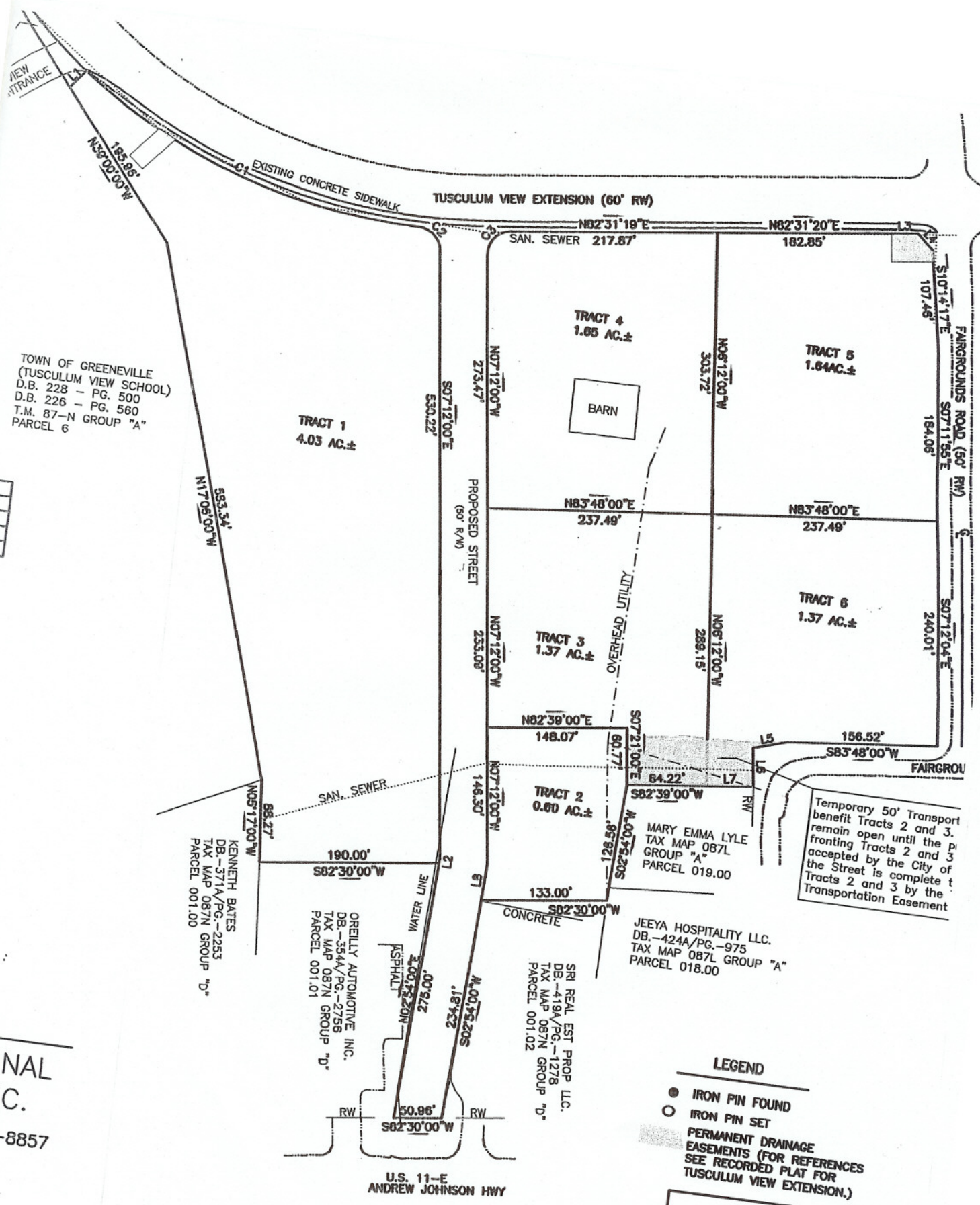
PROFESSIONAL
 ENGINEERING INC.
 (423)753-8857

LEGEND

- IRON PIN FOUND
- IRON PIN SET
- PERMANENT DRAINAGE EASEMENTS (FOR REFERENCES SEE RECORDED PLAT FOR TUSCULUM VIEW EXTENSION.)

CERTIFICATE OF APPROVAL FOR

I hereby certify that the subdivision
 comply with the Subdivision Regulatory
 exception of such variances if any



U.S. 11-E
 ANDREW JOHNSON HWY