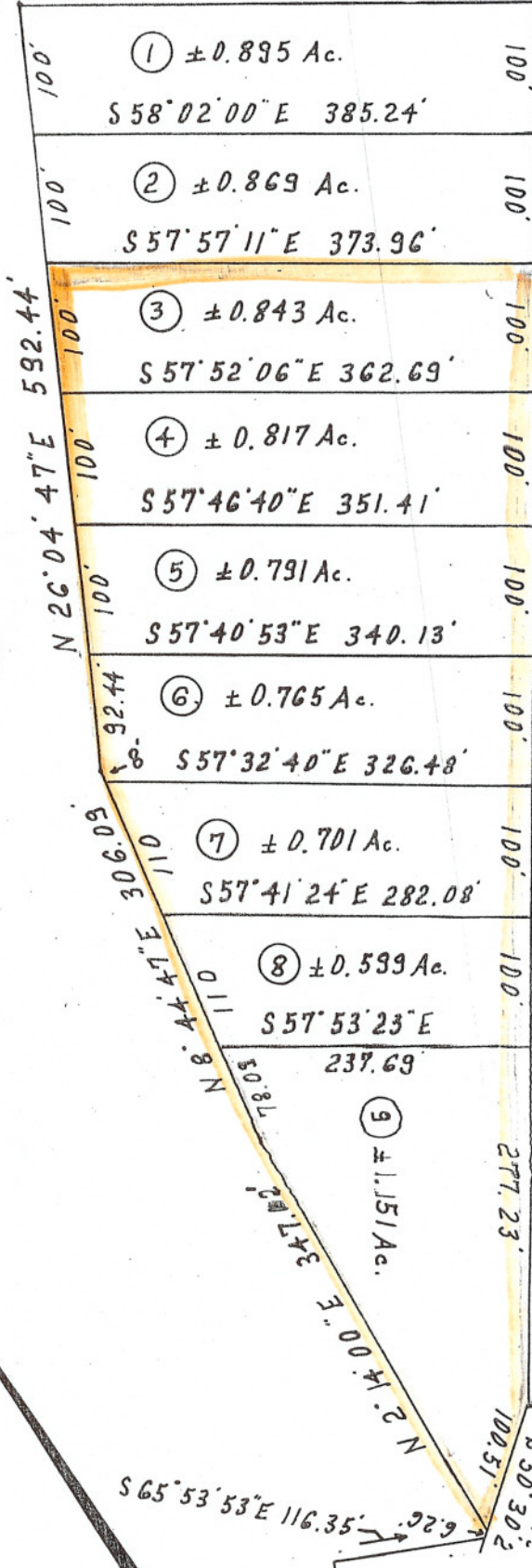


PAUL SHELTON
 D.B. 337 Pg. 767 & D.B. 419 Pg. 443

S 58° 06' 31" E 396.52'

JAMES W. WILLIAMS
 D.B. 218 Pg. 249



N 26° 04' 47" E 592.44'

S 32° 33' 08" W 1077.23'

CONC. MON.

CONC. MON.

11E
 34
 321

